



FRATA

Aviation Obstruction Light Low Intensity

FRATA's Part Number: 1084 - Input Voltage: 12VDC
1540 - Input Voltage: 24VDC
1355 - Input Voltage: 90~240 VAC
1823 - Input Voltage : 90~240 VAC RF
3257 - Input Voltage : 90~240 VAC Exportação

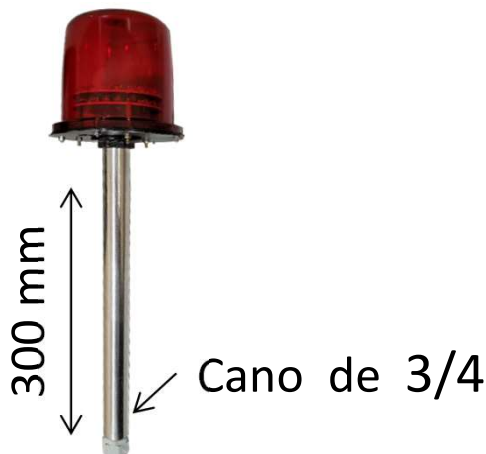
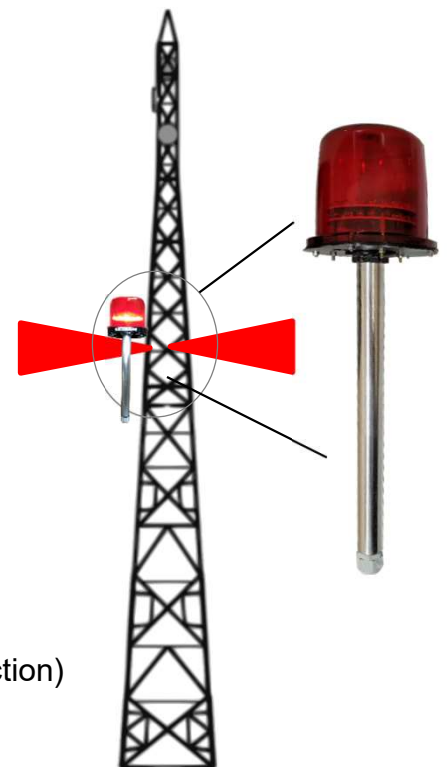
Specifications:

Standard:

FAA (USA): L-810

COMAER (Brasil): 1424/GC3

Light Intensity: > 32 cd
Light Source: LED Red - 100.000 hours
Steady Light
Light Beam: 360 ° Horizontal
Day/Night Sensor: Included
Protection: IP65
Weight: 0.6 Kg
Operating Temperature: -10 °C ~ + 55 °C
Enclosure: Aluminum, Polycarbonate (UV Protection)
Consumption: 4 W



Merely Illustrative Photo -
Fixture Example

Produtos Eletrônicos Frata Ltda.

Phone: + 55 11 3619-3556 | www.frata.com.br | frata@frata.com.br